

# AGENDA

**Meeting:** Pewsey Area Board  
**Place:** Woodborough Club, Smithy Lane, Woodborough, SN9 5PL  
**Date:** Monday 2 September 2019  
**Time:** 7.00 pm

---

**The Area Board welcomes and invites contributions from members of the public. The chairman will try to ensure that everyone who wishes to speak will have the opportunity to do so.**

If you have any requirements that would make your attendance at the meeting easier, please contact your Democratic Services Officer.

**Refreshments and networking opportunity from 6:30pm.**

---

Please direct any enquiries on this Agenda to Craig Player Democratic Services Officer, direct line 01225 713191 or email [craig.player@wiltshire.gov.uk](mailto:craig.player@wiltshire.gov.uk)

All the papers connected with this meeting are available on the Council's website at [www.wiltshire.gov.uk](http://www.wiltshire.gov.uk)

Press enquiries to Communications on direct lines (01225) 713114 / 713115.

---

## **Wiltshire Councillors**

Cllr Jerry Kunkler, Pewsey  
Cllr Paul Oatway QPM, Pewsey Vale  
Cllr Stuart Wheeler, Burbage and The Bedwyns

## **RECORDING AND BROADCASTING NOTIFICATION**

Wiltshire Council may record this meeting for live and/or subsequent broadcast on the Council's website at <http://www.wiltshire.public-i.tv>. At the start of the meeting, the Chairman will confirm if all or part of the meeting is being recorded. The images and sound recordings may also be used for training purposes within the Council.

By entering the meeting room you are consenting to being recorded and to the use of those images and recordings for broadcasting and/or training purposes.

The meeting may also be recorded by the press or members of the public.

Any person or organisation choosing to film, record or broadcast any meeting of the Council, its Cabinet or committees is responsible for any claims or other liability resulting from them so doing and by choosing to film, record or broadcast proceedings they accept that they are required to indemnify the Council, its members and officers in relation to any such claims or liabilities.

Details of the Council's Guidance on the Recording and Webcasting of Meetings is available on request.

### **Parking**

To find car parks by area follow [this link](#). The three Wiltshire Council Hubs where most meetings will be held are as follows:

**County Hall, Trowbridge**  
**Bourne Hill, Salisbury**  
**Monkton Park, Chippenham**

County Hall and Monkton Park have some limited visitor parking. Please note for meetings at County Hall you will need to log your car's registration details upon your arrival in reception using the tablet provided. If you may be attending a meeting for more than 2 hours, please provide your registration details to the Democratic Services Officer, who will arrange for your stay to be extended.

### **Public Participation**

Please see the agenda list on following pages for details of deadlines for submission of questions and statements for this meeting.

For extended details on meeting procedure, submission and scope of questions and other matters, please consult [Part 4 of the council's constitution](#).

The full constitution can be found at [this link](#).

For assistance on these and other matters please contact the officer named above for details

	<b>Time</b>
<p>1 <b>Welcome and Introductions</b></p> <p>The Chairman will welcome those present at the meeting.</p>	<b>7.00 pm</b>
<p>2 <b>Apologies for Absence</b></p>	
<p>3 <b>Minutes</b> (<i>Pages 5 - 14</i>)</p> <p>To confirm the minutes of the meeting held on 08 July 2019.</p>	
<p>4 <b>Declarations of Interest</b></p> <p>To receive any declarations of disclosable interests or dispensations granted by the Standards Committee.</p>	
<p>5 <b>Chairman's Announcements</b> (<i>Pages 15 - 18</i>)</p> <p>The Chairman will make the following announcements:</p> <ul style="list-style-type: none"> <li>• Downland School Consultation</li> <li>• How Dementia Friendly is Wiltshire?</li> </ul>	<b>7.05 pm</b>
<p>6 <b>Partner Updates Part 1</b> (<i>Pages 19 - 30</i>)</p> <p>To receive any updates from partner organisations:</p> <ul style="list-style-type: none"> <li>• Wiltshire Police</li> <li>• Dorset and Wiltshire Fire and Rescue</li> </ul>	<b>7.15 pm</b>
<p>7 <b>Update on the Working Groups and Projects</b></p> <p>a) Local Youth Network – Cllr Jerry Kunkler  b) Health and Wellbeing – Cllr Stuart Wheeler  c) Community Area Transport Group - Cllr Jerry Kunkler</p>	<b>7.30 pm</b>
<p>8 <b>Community Area Grants</b> (<i>Pages 31 - 58</i>)</p> <p>To consider three applications for Community Area Grants, as follows:</p> <ul style="list-style-type: none"> <li>• Pewsey Rugby Club – provision of new mower - £1950</li> <li>• Burbage Village Hall – provision of new doors - £1800</li> <li>• Easton Royal Village Hall – provision of new doors - £756</li> <li>• SWAST Community First Responder - Raizer Lifting Chair for Upavon Community First Responder Group - £1500</li> </ul> <p>To consider three member-led initiatives for Youth funding as follows:</p> <ul style="list-style-type: none"> <li>• Open Blue Bus – Cllr Jerry Kunkler - £6800</li> </ul>	<b>7.45 pm</b>

- Mental Health Support for Young People – Cllr Jerry Kunkler - £650 plus £1000 to be reassigned from the 21<sup>st</sup> Century initiative.
- Ice Rink – Cllr Jerry Kunkler - £1500

To also consider an application for Community Area Grant funding from Burbage and Easton Royal Cricket Club for outfield levelling. The application was originally considered at the May meeting of the Area Board in which it was awarded £2000. It was decided that the application would be brought back to the September meeting to see if there was any additional funding available to meet the remainder of their original £5000 request.

9 **Partner Updates Part 2** (*Pages 59 - 60*)

8.15 pm

To receive updates from partner organisations:

- Spotlight on Parishes
- Pewsey Community Area Partnership
- Healthwatch
- NHS Wiltshire Clinical Commissioning Group

10 **Urgent items**

8.30 pm

Any other items of business which the Chairman agrees to consider as a matter of urgency.

11 **Future Meeting Dates and Close**

The next meeting of the Pewsey Area Board is scheduled for 11 November 2019, 7pm at Burbage Village Hall.

# MINUTES

**Meeting:** PEWSEY AREA BOARD  
**Place:** The Vale Community Campus, Wilcot Road, Pewsey, SN9 5EW  
**Date:** 8 July 2019  
**Start Time:** 7.00 pm  
**Finish Time:** 8.30 pm

---

Please direct any enquiries on these minutes to:

Craig Player Democratic Services Officer, Tel: 01225 713191 or (e-mail) [craig.player@wiltshire.gov.uk](mailto:craig.player@wiltshire.gov.uk)

Papers available on the Council's website at [www.wiltshire.gov.uk](http://www.wiltshire.gov.uk)

---

## **In Attendance:**

### **Wiltshire Councillors**

Cllr Jerry Kunkler, Cllr Paul Oatway QPM and Cllr Stuart Wheeler

### **Wiltshire Council Officers**

Craig Player (Democratic Services Officer) and Richard Rogers (Community Engagement Manager)

### **Parish Councils**

Burbage Parish Council – Glenda Pearce  
Charlton and Wilsford Parish Council – Geoff Reilly  
North Newton Parish Council – Tom Ellen  
Pewsey Parish Council – Curly Haskell  
Rushall Parish Council - Colin Gale  
Upavon Parish Council – John Tighe  
Wilcot and Huish Parish Council – Dawn Wilson

### **Partners**

Wiltshire Police – PC Emily Grigor and Community Coordinator Beth Butwell  
Wiltshire Fire and Rescue – Station Manager East Dave Adamson

**Total in attendance: 30**

---

<u>Agenda Item No.</u>	<u>Summary of Issues Discussed and Decision</u>
43	<u>Election of the Chairman</u>  <b>Resolved</b>  <b>To appoint Cllr Jerry Kunkler as Chairman of Pewsey Area Board for the 2019/2020 municipal year.</b>
44	<u>Election of Vice-Chairman</u>  <b>Resolved</b>  <b>To appoint Cllr Paul Oatway QPM as Vice-Chairman of Pewsey Area Board for the 2019/2020 municipal year.</b>
45	<u>Welcome and Introductions</u>  The Chairman welcomed everyone to the meeting and introduced the Area Board Members and Council officers.
46	<u>Apologies for Absence</u>  Apologies were received from Caroline Dalrymple.
47	<u>Minutes</u>  The minutes of the meeting held on 20 May 2019 were agreed as a correct record and signed by the Chairman.
48	<u>Declarations of Interest</u>  There were no declarations of interest.
49	<u>Chairman's Announcements</u>  The Chairman drew attention to the following written announcements available in the agenda pack: <ul style="list-style-type: none"> <li>• Healthier Communities</li> <li>• Winter Weather Preparations</li> <li>• Highways Improvement Survey Requests</li> </ul>
50	<u>Partner Updates Part 1</u>  (a) <u>Wiltshire Police</u> – the written update is attached to the minutes and the following points noted:

	<ul style="list-style-type: none"> <li>• Dedicated patrols of the Co-Op car park had been conducted and words of advice had been given to a motorist.</li> <li>• It was anticipated that with more people visiting our beauty spots incidences of theft may also increase. Members of the public were encouraged to refrain from leaving any valuables within their vehicles.</li> <li>• Wiltshire Police will be receiving fortnightly updates from Community Speedwatch Teams with specific areas to target.</li> <li>• That there has been an increase in reports of both domestic and commercial burglaries within the Marlborough, Devizes and Pewsey areas and members of the public were encouraged to stay vigilant.</li> <li>• The Area Board was assured that vulnerable areas were being regularly patrolled and residents were encouraged to report any disturbances to the 101 service.</li> </ul> <p>(b) <u>Wiltshire Fire and Rescue</u> – the written report and following points were noted:</p> <ul style="list-style-type: none"> <li>• The service had recently been called to thatch fires in Haxton and Wroughton.</li> <li>• Residents were assured that the number of false alarms was not out of the ordinary, and that none the these were malicious.</li> <li>• In general, the station was well staffed with 90% or more availability.</li> <li>• The Area Board’s appreciation for the fire service and its recent recruitment drive was noted, as well as its thanks to employers for allowing their on-call employees to be released from work.</li> <li>• The Area Board was assured that while the service was financially stretched, there had been no discussions about closing stations to date.</li> </ul>
51	<p><u>Appointment to Working Groups and Outside Bodies</u></p> <p>The following appointments to Working Groups and Outside Bodies were made for the forthcoming year:</p> <p>Outside Bodies:</p> <ul style="list-style-type: none"> <li>a) Partnership for Older People in Pewsey (POPP) – Cllr Stuart Wheeler</li> <li>b) Pewsey – The Vale Health and Wellbeing Centre – Cllr Paul Oatway QPM</li> <li>c) Pewsey Community Area Partnership (PCAP) – Cllr Paul Oatway QPM</li> </ul> <p>Working Groups:</p> <ul style="list-style-type: none"> <li>a) Community Area Transport Group (CATG) – Cllr Jerry Kunkler</li> </ul>



	<p>b) Local Youth Network Management Group – Cllr Jerry Kunkler</p> <p>c) Health and Wellbeing Group – Cllr Stuart Wheeler</p>
52	<p><u>Community Engagement Manager Update</u></p> <p>Richard Rogers, Community Engagement Manager, gave an update on the minor changes to grants from September onwards. These include:</p> <ol style="list-style-type: none"> <li>1. Health &amp; Wellbeing and youth projects over £1000 will require match funding as the norm, in line with capital projects. Some commissioning projects may be excluded.</li> <li>2. Commercial and statutory organisations can access funding but only when they are demonstrating community benefit e.g. apprenticeship project with Garage in Westbury.</li> <li>3. We will remove the maximum of applying to three Area Boards approach to allow role out of successful projects.</li> </ol> <p>In all cases the elected members can, when there is good reason, override these criteria but only as an exception. Other changes include the tightening up of safeguarding and insurance policies and the use of the Housing Associations Charitable Trust model.</p> <p>The success of the Armed Forces Weekend in Salisbury was also noted and the Area Board was informed of plans to bring the Armed Forces tapestry to Pewsey.</p>
53	<p><u>Update on the Working Groups and Projects</u></p> <p>a) <u>Local Youth Network – the following points were noted:</u></p> <ul style="list-style-type: none"> <li>• The Blue Bus Project funding proposal would be brought to the September meeting of the Area Board. It looks set to go out for 10 months, covering one area each month.</li> </ul> <p>b) <u>Health and Wellbeing Group – the following point was noted:</u></p> <ul style="list-style-type: none"> <li>• The last meeting of the Pewsey Vale Health and Wellbeing Forum was on 01 July and its minutes are attached.</li> </ul> <p>c) <u>Community Area Transport Group</u></p> <p><b>Resolved</b></p> <p><b>To adopt the recommendations of the Community Area Transport Group as outlined in the report.</b></p>

54	<p><u>Community Area Grants</u></p> <p>The Area Board considered two applications for Community Area Grant funding and one application for Health and Wellbeing funding.</p> <p>The Chairman invited the local Councillor to introduce each application, following which a representative of the applicant was given an opportunity to give a brief overview of their project to the Area Board.</p> <p><b>Resolved</b></p> <ol style="list-style-type: none"> <li><b>1. To award Woodborough Parish Council - £440 for the conversion of the Woodborough ex BT telephone kiosk.</b></li> <li><b>2. To award Upavon Bellringers - £500 for Upavon St. Mary's bellropes.</b></li> <li><b>3. To award PCAP Memory Café - £1600 for the Armchair Exercise Pilot in Pewsey.</b></li> </ol>
55	<p><u>Partner Updates Part 2</u></p> <p>a) <u>Spotlight on Parishes</u></p> <ul style="list-style-type: none"> <li>• Woodborough Parish Council's White Horse will be chalked with the help of the RAF and local volunteers.</li> <li>• Pewsey Tennis Club had recently held a successful tournament raising money for Help the Heroes.</li> <li>• Pewsey Parish Council had approved the devolution of a range of services and assets, including all play areas, tree and grounds maintenance and all street cleaning services.</li> </ul> <p>b) <u>HealthWatch</u> - the written update was noted.</p> <p>c) <u>Pewsey Area Partnership (PCAP)</u> – the following points were noted:</p> <ul style="list-style-type: none"> <li>• The Memory Café had a successful trip along the canal and PCAP hoped to bring a film detailing this to the next Area Board.</li> <li>• PCAP had attended the Great Western Railway Community Event in Bristol and endorsed the use of smart ticketing as a cheap and simple way of using the service.</li> <li>• PCAP had been in contact with Natural England about the White Horse Project and residents were encouraged to follow the link on PCAP's Facebook page to help inform how this project will be approached.</li> <li>• Residents were encouraged to renew their Pewsey Tourism membership or take out a membership if they had not already done so.</li> </ul>

56	<p><u>Urgent items</u></p> <p>There were no urgent items.</p>
57	<p><u>Future Meeting Dates and Close</u></p> <p>The next meeting of the Pewsey Area Board is scheduled for 02 September 2019, 7pm at Woodborough Club, Smithy Lane, Woodborough, SN9 5PL.</p> <p>The Chairman thanked everyone for attending.</p>

This page is intentionally left blank

## PEWSEY VALE HEALTH & WELLBEING FORUM

Minutes of the meeting on July 1<sup>st</sup> 2019 2-30 pm at Parish Meeting Room, Pewsey

### MINUTES

**Attending:** Dawn Wilson (PCAP), Richard Rodgers (Wilts Council CEM), Susie Brew (PCAP), Hilary Hollingsworth (Churches), Jennifer Totney (Pewsey Church) and David Line (Pewsey 50+ Badminton Club)

**Apologies:** Susan Hiscocks (Kennet Gateway Club), Fanny Middleton (Alzheimer's Support). Sanjana (Health Trainer), Pauline Dark (Churches), Cllr Stuart Wheeler (Pewsey Area Board), Judy Haynes (Grt Bedwyn Footpaths), Sylvie Claydon (Occupational Therapist supporting Dementia), Julian Rigsby (Carers Support Wilts), Lesley Green (Shalbourne Craft Group) and Matt Pearson (Wilts Council Sports Development Officer – North)

1. **Welcome and introductions**-see above. Dawn welcomed everyone.
2. **Previous minutes**- *Resolved* that these be accepted.
3. **Update on actions /matters arising** – Most actions completed or ongoing. Specific discussion took place around
  - i. Asset Mapping – Updated with information form Burbage. ACTION: It will be reviewed regularly to keep it up to date by PCAP and shared via website. Invite local surgeries to make use of it.
  - ii. Armchair Exercise–It is proposed to run a pilot for 12 weeks every 2 weeks in the Bouverie Hall on a Friday morning from September 6th. Sylvie will support this group and help with assessments. Initial costs of around £1600.00 to include full costs for 12 sessions including some transport costs. Dawn proposed funds be put before the Area Board for approval in July. All in favour. ACTION DW to submit the application to Richard by the end of the week.
  - iii. Mental Health Training – still waiting for a reply from Pewsey Vale School re the 21<sup>st</sup> Century Offer. DW to Follow up ASAP.
4. **Grant Applications**-
  - i. The Christmas lunch group (Brian Hollands) in Pewsey received a contribution for 2019. The group resolved to make a straight donation of 100.00 with the support of the Area Board. Cllr Wheeler asked if other villages have a similar offer or if they might have those who could attend in Pewsey.
  - ii. Adjustable Chair for Bouverie Hall that hosts a number of groups for older and vulnerable people for chairs suitable for those with hip replacements or other issues with low seats. ACTION Sylvie to follow up please or get a quote.
5. **Update on funded projects**-
  - i. Canal Boat Trip with Memory Café was very successful. Everyone enjoyed it. A short film will be shown at the next café and permission sought to share it with the Area Board who funded the trip. We now need to identify another group perhaps residents at Meadow Court? Great Bedwyn, organised via the Churches group, also had a successful trip and hope to run another next year.

- ii. Raizer Chair – now used several times successfully. It was also demonstrating its usefulness at the Steam Fair in Oare last month raising awareness of the First Responders and what they do as volunteers.
  - iii. Great Bedwyn Walks Group – The walks in June were very successful. [Bedwynhealthwalks@gmail.com](mailto:Bedwynhealthwalks@gmail.com) Facebook page – Bedwyn Health Walks, @bedwynhealthwalks and Judy Haynes [bedwynfootpathsgroup@gmail.com](mailto:bedwynfootpathsgroup@gmail.com) [www.bedwynfootpathsgroup.org.uk](http://www.bedwynfootpathsgroup.org.uk)
  - iv. Matthew Pearson circulated the Live Well poster for afternoon activities at The Vale Leisure Centre.
  - v. Pewsey Vale Tourism Partnership Walking Leaflets for the Vale – Susie reported that the 12 walking leaflets already printed have been well received. They are available in Print and online. Longer term funds for reprinting will need to be found for this.
  - vi. Richard circulated a list of projects funded to date around the county for ideas. Hilary suggested that Carol Parsons of Cossor’s Shop and the Carnival might have a suitable site for a Men’s Shed at their unit at Salisbury Road as well as connections for who might run it.
6. **Marketing (Forum/Grants/Older Peoples Champion)** – the editorial of around 150 words is available to help raise awareness of the group and funding available.

**LAST minute addition:**

Wiltshire Council aims to provide a broad and accessible sexual health training programme tailored towards the needs of professionals.

To enable us to identify gaps in training provision and to make improvements to programme we are inviting a wide range of professionals from various backgrounds whose roles present opportunities to deliver sexual health messages to people of all ages to complete the short survey below.

The survey provides the opportunity to state which areas you feel we are missing and what areas you feel we could focus on to equip your service to deliver effective sexual health messages to the people you work with. This survey takes approximately 3 minutes to complete. Please complete the survey by Monday 22nd July 2019.

Thank you for your time assisting us with this training needs assessment, your feedback will be vital for the development and delivery of the new training programme.

Should you have any questions please do not hesitate to get in touch.

Survey link: <http://surveys.wiltshire.gov.uk/snapwebhost/s.asp?k=156173047933>

Next meeting on mid October TBC – Venue -Pewsey Parish Meeting Room

**Future dates will be published on the website – [www.pewseycap.org.uk/events](http://www.pewseycap.org.uk/events)**

**Thank you to all who attended and gave up their time.**

**Contact: Susie Brew – PCAP Coordinator [pcap@hotmail.co.uk](mailto:pcap@hotmail.co.uk) or [Dawnwilson917@yahoo.com](mailto:Dawnwilson917@yahoo.com)**

Signed \_\_\_\_\_ Date \_\_\_\_\_  
Cllr Stuart Wheeler (Chair)

## **Chairman's Announcements**

<b>Subject:</b>	<b>Proposal to increase Downland School capacity</b>
<b>Web contact:</b>	<a href="http://consult.wiltshire.gov.uk/portal/education/consultation_to_increase_capacity?tab=info">http://consult.wiltshire.gov.uk/portal/education/consultation_to_increase_capacity?tab=info</a>

Wiltshire Council is proposing to increase the number of places at Downland School from 69 places to 90 from September 2019.

Downland is a special school, situated on the southern edge of Devizes and opened in 1971, that continues to support the needs of children and young people who have an Education Health and Care Plan (EHCP) identified to support their Social, Emotional and Mental Health needs.

Expanding the school is part of Wiltshire's SEND Local Area plans to increase the number of special school places across the county to meet the needs of the growing number of children and young people with SEND.

An informal pre-publication consultation has recently taken place which concluded on 14 July. It is now necessary to undertake the formal statutory process. This began with publication of a statutory notice on 18 of July 2019. The statutory requirement is for this period to run for 4 weeks. However, as a 4- week period would run into school holidays representation can be made up to 21 September 2019.

Comments can be made via email or letter no later than 21 September 2019 either by writing to Downland Consultation, Children's Commissioning, Wiltshire Council, Bythesea Rd, Trowbridge, BA14 8JN, emailing [SpecialSchools@wiltshire.gov.uk](mailto:SpecialSchools@wiltshire.gov.uk) or following the link above to the Wiltshire Council consultation portal.

This page is intentionally left blank



## **Chairman's Announcements**

<b>Subject:</b>	<b>How Dementia Friendly is Wiltshire?</b>
<b>Web contact:</b>	<a href="https://www.healthwatchwiltshire.co.uk/report/2019-07-24/how-dementia-friendly-wiltshire">https://www.healthwatchwiltshire.co.uk/report/2019-07-24/how-dementia-friendly-wiltshire</a>

Healthwatch Wiltshire's latest report is now available online. It gathered the views and experiences of more than 100 people in the county who are affected by dementia.

“How Dementia Friendly is Wiltshire?” focuses on two elements - how local dementia friendly initiatives are working to make their area more dementia friendly, and how much those living with dementia feel they benefit from them.

Healthwatch Wiltshire visited 15 community groups across Wiltshire and invited people to take part in a survey or a 1:1 interview to gather their feedback.

The report details what people living with dementia and their carers value most about dementia friendly initiatives and can be accessed via the link above.

This page is intentionally left blank

WILTSHIRE POLICE

## CPT Area Briefing

Wiltshire East Community Policing Team

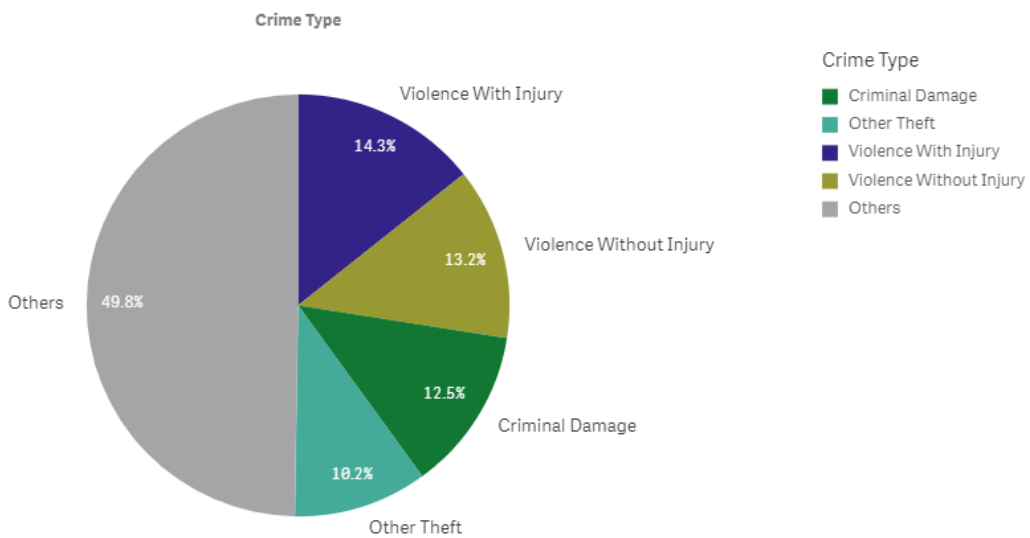


Proud to serve and protect our communities

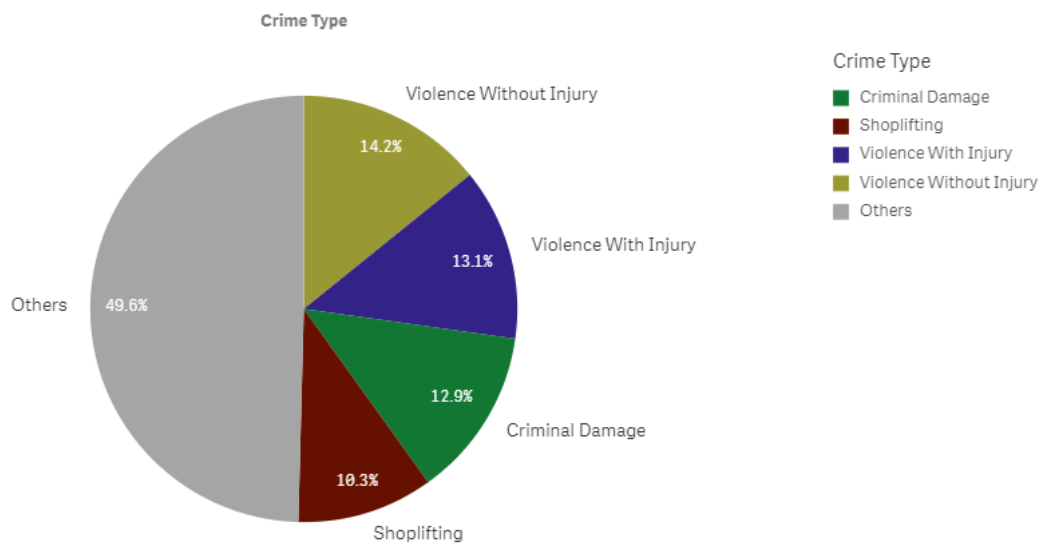
August 2019

### PERFORMANCE

Your Area - Five Highest Crime Groups (Previous 12 months)



Force Area - Five Highest Crime Groups (Previous 12 months)



Wiltshire East CPT - crime and incident demand for the 12 months to July 2019

WILTSHIRE POLICE

# CPT Area Briefing

Wiltshire East Community Policing Team



Proud to serve and protect our communities

August 2019

## Force-wide

- Wiltshire Police has reduced the volume of recorded crime by 1% in the 12 months to July 19 and continues to have one of the lowest crime rates in the country.
- Our service delivery remains consistently good.
- In July, we received 9,653 999 calls which we answered within 4 seconds on average and 14,474 101 calls which we answered within 1 minutes 44 seconds on average.
- In July, we also attended 1,862 emergency incidents within 10 minutes and 49 seconds on average.
- Wiltshire Police has seen a 26% reduction in vehicle crime and 20 per cent in burglary in the 12 months to June 2019. These are the most improved trends in the country.
- The Crime Survey of England & Wales recently ranked Wiltshire as one of the top forces nationally for public confidence. It covers the 12 months to December 2018 The publication can be found here: [WWW.CRIMESURVEY.CO.UK](http://WWW.CRIMESURVEY.CO.UK)

For more information on Wiltshire Police's performance please visit:

PCC's Website - <https://www.wiltshire-pcc.gov.uk/article/1847/Performance>

HMICFRS Website - <https://www.justiceinspectrates.gov.uk/hmicfrs/police-forces/wiltshire/>

Police.uk - <https://www.police.uk/wiltshire>

WILTSHIRE POLICE

# CPT Area Briefing

Wiltshire East Community Policing Team

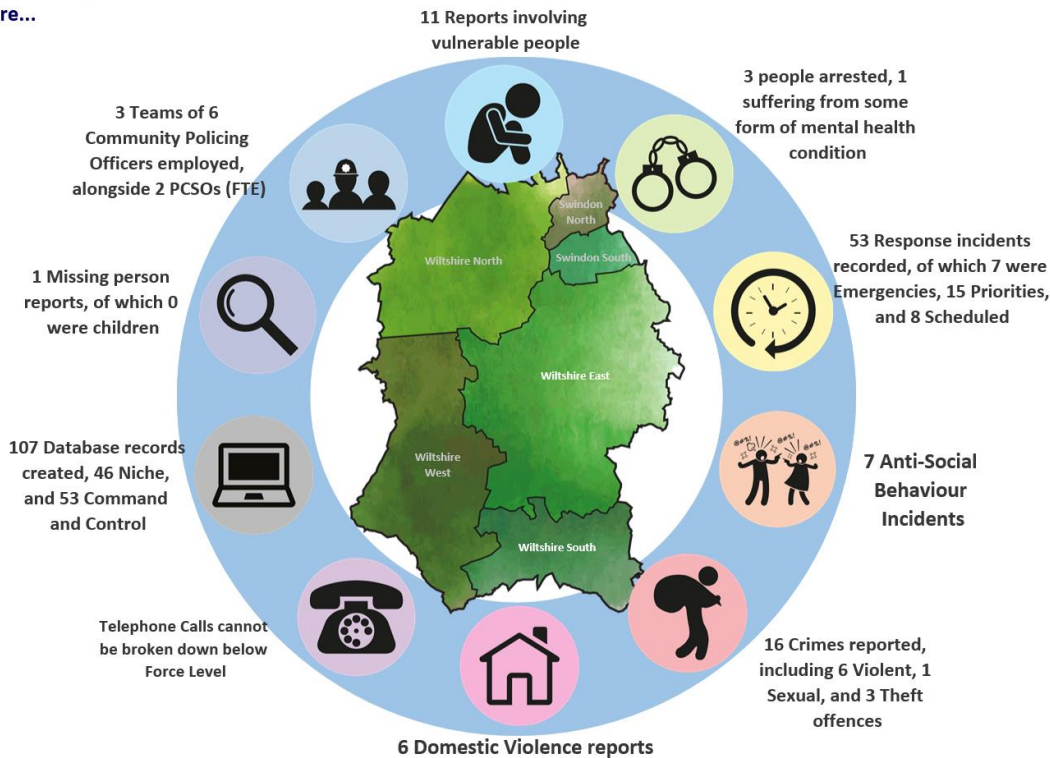


Proud to serve and protect our communities

August 2019

## Area specific

On an average day in Wiltshire East there were...



Wiltshire East CPT Demand Overview – 12 months to July 2019

### PEWSEY CRIME STATISTICS FROM 01/07/2019 – 31/07/2019:

- 8 REPORTS ASB
- 6 REPORTS OF BURGLARY
- 1 REPORT OF DRUG OFFENCES
- 10 REPORTS OF THEFT
- 6 REPORTS OF VIOLENT CRIME
- 3 REPORTS OF CRIMINAL DAMAGE
- 2 REPORTS OF PUBLIC ORDER
- 9 REPORTS OF VEHICLE OFFENCES (Beauty Spot theft from motor vehicles)

WILTSHIRE POLICE

# CPT Area Briefing

Wiltshire East Community Policing Team



Proud to serve and protect our communities

August 2019

## HIGH LEVEL CPT UPDATES:



**Pewsey Police**

Published by Emily Johnson [?] · 2 July · 🌐

PCSO Johnson is at Junior Good Citizen this week doing hate crime talks to the students. Today, Easton Royal Primary visited! It was good to see the children who all had very good knowledge and questions! 👍 😊 🙌



Three men convicted of Burbage petrol station burglary - PS Tracey Holloway, East Wiltshire CPT deputy praised the combined efforts of staff and the community: "We would like to thank the member of the public who quickly rang us with information about the burglary in the early hours of the morning, this sense of community spirit was key to help our officers to locate, detain and prosecute these men. We would encourage the public to take action if they should witness a crime in progress by calling us on 999 straight away and provide as much detail as possible."



WILTSHIRE.POLICE.UK

**Excellent team work leads to three men from London convicted of Burbage Petrol Station burglary - Wiltshire Police**

On 31 July at Salisbury Crown Court three men pleaded guilty to a burglary at a petrol station in...

PCSO Paul Whiteside was at Coopers Arms Fund Raiser Day today in Aid of Wiltshire Air Ambulance. The day seemed to be a great success.



WILTSHIRE POLICE

# CPT Area Briefing

Wiltshire East Community Policing Team



Proud to serve and protect our communities

August 2019

Krzysztof Radzki, aged 56, of Pewsey, was arrested in Broomcroft Road at approximately 11.30am. He has been charged with drink driving and is due in Salisbury Magistrates Court on August 30.

Drink driving is never worth the risk.

To report a drink driver - this is someone who is currently in a car or someone who is about to drive - call 101 and select option 4.

If you know someone who regularly drink drives, please call 101 and tell us as much information as possible, such as:

Driver details and or description

Car registration

Time and day (if it's always on Thursday evening at 8pm).



## Wiltshire East CPT has a new Community Policing Sergeant.

Tracey HOLLOWAY has worked for Wiltshire Police for 13 years starting her career as a PCSO. She has worked in community policing throughout her career with roles such as Beat manger, Community Coordinator and Team Sgt.

*"My role as the deputy Sgt is to ensure we engage with our communities and promote our visibility; Ensuring the CPT respond effectively to longer-term community issues and the coordination of multi-agency approaches to problem solving.  
I have worked the majority of my career in Salisbury dealing with many community issues. I am passionate about community policing and enjoy the challenge of problem solving from different areas. I look forward to working in the local community of Devizes"*

WILTSHIRE POLICE

# CPT Area Briefing

Wiltshire East Community Policing Team



Proud to serve and protect our communities

August 2019

## YOUR CPT – Wiltshire East



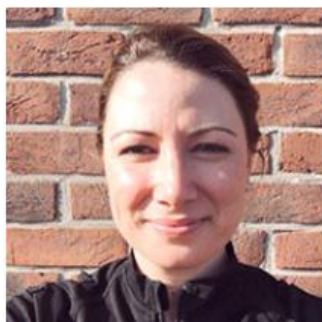
A/Inspector Pete Foster

[Peter.Foster@wiltshire.pnn.police.uk](mailto:Peter.Foster@wiltshire.pnn.police.uk)



Sgt Tracey Holloway – Sector Deputy

[Tracey.Holloway@Wiltshire.pnn.police.uk](mailto:Tracey.Holloway@Wiltshire.pnn.police.uk)



PC Emily Grigor – Community Coordinator

[Emily.Grigor@Wiltshire.pnn.police.uk](mailto:Emily.Grigor@Wiltshire.pnn.police.uk)



WILTSHIRE POLICE

# CPT Area Briefing

Wiltshire East Community Policing Team



**Proud** to serve and **protect** our communities

August 2019



PCSO Paul Whiteside

[Paul.Whiteside@Wiltshire.pnn.police.uk](mailto:Paul.Whiteside@Wiltshire.pnn.police.uk)



PCSO Emily Johnson

[Emily.Johnson@Wiltshire.pnn.police.uk](mailto:Emily.Johnson@Wiltshire.pnn.police.uk)

You can find out more about Wiltshire East CPT, including news stories and contacts for local officers, on our website: [www.wiltshire.police.uk/WiltshireEast](http://www.wiltshire.police.uk/WiltshireEast)

WILTSHIRE POLICE

# CPT Area Briefing

Wiltshire East Community Policing Team



Proud to serve and protect our communities

August 2019

## LOCAL PRIORITIES

CPT Inspector to update progress on each

PRIORITIES FOR WILTSHIRE EAST CPT	UPDATE
<b>Priority 1: <u>ANTISOCIAL BEHAVIOUR</u></b>	
Co-Op Car Park & surrounding area - vehicle anti-social behaviour	Continued high visibility patrols of the area. This is not only by our East Sector PC's and PCSO's but also our Special Ops colleagues, such as Firearms and dogs.
<b>Priority 2: : RURAL CRIME: HARECOURSING AND BEAUTY SPOT THEFTS</b>	
<p>It is imperative that we maintain a high visible presence within our rural county. As summertime is fast approaching, we anticipate an increase in visitors to both our Beauty Spot areas and countryside.</p> <p>We will be aiming to regularly patrol our Beauty Spots and our rural sites that unfortunately do become a target of vehicle and rural crime.</p> <p><u>ADVICE:</u></p> <p>It is important for members of the public not to leave any valuables within their vehicles. It is also important for members of the Public to report any suspicious activity to us via 101 or 999 if it is a crime in progress.</p>	<p>Continued high visibility patrols in the most vulnerable areas.</p> <p>We are still receiving reports of vehicles having been broken in to- please ensure no valuables are left in your cars.</p>
<b>Priority 3: VEHICLE CRIME AND COMMUNITY SPEED WATCH</b>	
<p>Keeping our roads safe is extremely important within our area as we have several A Roads that pass through our County.</p> <p>We will be receiving fortnightly updates from our Community Speed Watch Teams with specific areas to target. It is important that we work with the general public to identify unsafe road users within our county. We hope to show how hard we will be working to target the roads through our Social Media updates and cooperation with Community Speed Watch Schemes</p>	Continued high visibility mobile patrols at significant times of day.

WILTSHIRE POLICE

# CPT Area Briefing

Wiltshire East Community Policing Team



Proud to serve and protect our communities

August 2019

## Priority 4: BURGLARIES

We have seen an increase in reports of both domestic and commercial burglaries within the Marlborough area.

### ADVICE FOR COMMERCIAL PREMISES:

- Removing high value goods from window displays and leave the till open - by leaving the till visible, open and clearly empty, any burglars seeking cash are likely to lose interest.
- Install dusk-to-dawn lighting at any entrance to the property that is overlooked and by securing high risk display cabinets, such as for tobacco displays, with protective grilles and shutters.
- Bank your cash - If you do not leave cash in the store overnight it cannot be stolen in a burglary. Night safe facilities are available after opening hours. If you do not use a specialist cash collection agency be sure you vary the route you take to the bank and the times you leave the shop.
- Doors and windows are particularly vulnerable - use security-rated products to make them more burglar-resistant. For more details visit Secure by Design.

### ADVICE FOR DOMESTIC PREMISES:

- Lock your doors and windows every time you leave the house, even when just in the garden and never leave a spare key in a hiding place like in a plant pot or letter box - a thief knows all the hiding places
- Register all serial numbers from electrical items, tools and garden equipment with Immobilise.com the free national property register. Mark items without serial numbers with an artificial DNA property marker such as Smartwater or SelectaDNA.
- Use a timer to set lights to mimic your usual activity when you are not at home.
- Do not open the door to anyone you don't know or are not expecting. Always check by using a spy-hole or look through a window. Don't trust an ID card.
- Always report any suspicious activity, note any vehicle registrations, descriptions of persons involved and direction of travel.
- Consider installing a monitored burglar alarm, and only use a company that is registered or certified with the NSI or the SSIAB.
- Take photographs of all jewellery including hallmarks and keep them safe. Make sure that you have up to date contents insurance.
- Keep all keys, purses and wallets out of sight and away from the letterbox.

WILTSHIRE POLICE

# CPT Area Briefing

Wiltshire East Community Policing Team



Proud to serve and protect our communities

August 2019

## HIGH LEVEL PCC UPDATES

- **Pay increase** - Police Officers are to receive a 2.5% pay increase as agreed by the Government. This is welcome news and well deserved, I only hope that the same increase is also afforded to police staff as well. However, it is expected that we will have to meet this increase from existing Wiltshire Police budgets and that no further funding will come from the Government to fund this rise, which is disappointing and I continue to lobby the Government for fairer funding in Wiltshire.
- **PCSOs** - Last month Wiltshire Police Federation, which represents police officers within the Force, wrote an open letter suggesting that the Force should 'axe PCSOs' and recruit police constables instead. Both the Chief and I strongly refuted this suggestion. We both recognise the key role that PCSOs play in community engagement, intelligence gathering and supporting the most vulnerable. The role of a PCSO is a completely different one to that of a police constable and they play a key role in our community policing teams.
- **Additional police officers** - I was pleased to hear the new Prime Minister's commitment to policing and his promise of 20,000 additional police officers in the next three years. We don't know what this will look like in terms of how many more we will get in Wiltshire but I trust that more detail will soon be forthcoming. I do have some concerns around the practicalities of recruiting so many officers in such a short period of time and it certainly won't happen overnight, with it taking around a year to recruit and train an officer before they're able to go on the beat, but his commitment to strengthening our police forces is welcome nonetheless.

## HIGH LEVEL FORCE UPDATES

- **Youth crime** – A Government report into the increase in youth violence has been welcomed by the Force. Chief Constable Kier Pritchard has said that although there hasn't been a significant increase in Wiltshire, it is still a concerning issue for local people. He is calling for a multi-agency approach and focused on the need to engage with young people to help prevent them from falling into a life of crime.
- **Rural crime** – Wiltshire has bucked the national trend when it comes to rural crime, recording a 36% year-on-year drop when it comes to the amount of money this type of crime is costing people in the county. This is believed to be due to the focus our Rural Crime Team has placed on crime prevention advice, including the encouragement of CCTV, anti-poaching ditches and the installation of GPS trackers on equipment.

WILTSHIRE POLICE

# CPT Area Briefing

Wiltshire East Community Policing Team



Proud to serve and protect our communities

August 2019

- **Domestic abuse** – As part of our Summer Demand campaign, we have been focusing on highlighting the important topic of domestic abuse and making sure victims know how to access the support available. There is also a focus on encouraging friends and neighbours to report concerns to the police. You can read more online: <https://www.wiltshire.police.uk/article/4820/VIDEO-What-to-do-if-you-have-concerns-your-neighbour-is-being-abused-by-a-partner>

## GET INVOLVED

- You can keep up to date with the latest news in your area by signing up to our Community Messaging service – [www.wiltsmessaging.co.uk](http://www.wiltsmessaging.co.uk)
- You can follow your CPT on social media <https://www.wiltshire.police.uk/Followus>
- More information on your CPT area can be found here: [www.wiltshire.police.uk](http://www.wiltshire.police.uk) and here [www.wiltshire-pcc.gov.uk](http://www.wiltshire-pcc.gov.uk)

## FEEDBACK/ACTIONS TAKEN

This page is intentionally left blank

<b>Report to</b>	Pewsey Area Board
<b>Date of Meeting</b>	02/09/2019
<b>Title of Report</b>	Community Area Grant funding

**Purpose of the report:**

To consider the applications for funding listed below

<b>Applicant</b>	<b>Amount requested</b>
<b>Applicant:</b> Easton Royal Village Hall <b>Project Title:</b> Easton Royal Village Hall replacement double doors  <a href="#">View full application</a>	£746.00
<b>Applicant:</b> Pewsey Vale Rugby Football Club <b>Project Title:</b> Playing Field Grass Cutting Machine  <a href="#">View full application</a>	£1950.00
<b>Applicant:</b> Burbage Village Hall CIO <b>Project Title:</b> Burbage Village Hall New Doors  <a href="#">View full application</a>	£1800.00
<b>Applicant:</b> SWAST Community First Responder <b>Project Title:</b> Raizer Lifting Chair for Upavon Community First Responder Group  <a href="#">View full application</a>	£1500.00

**1. Background**

Area Boards have authority to approve Area Grants under powers delegated to them. Under the Scheme of Delegation Area Boards must adhere to the [Area Board Grants Guidance](#)

[The funding criteria and application forms](#) are available on the council's website.

**2. Main Considerations**

2.1. Councillors will need to be satisfied that funding awarded in the 2015/2016 year

is made to projects that can realistically proceed within a year of it being awarded.

2.2. Councillors must ensure that the distribution of funding is in accordance with the Scheme of Delegation to Area Boards.

2.3. Councillors will need to be satisfied that the applications meet the Community Area Board grants criteria.

### **3. Environmental & Community Implications**

Grant Funding will contribute to the continuance and/or improvement of cultural, social and community activity and wellbeing in the community area, the extent of which will be dependent upon the individual project.

### **4. Financial Implications**

Financial provision had been made to cover this expenditure.

### **5. Legal Implications**

There are no specific legal implications related to this report.

### **6. Human Resources Implications**

There are no specific human resources implications related to this report.

### **7. Equality and Inclusion Implications**

Community Area Boards must fully consider the equality impacts of their decisions in order to meet the Council's Public Sector Equality Duty.

Community Area Grants will give local community and voluntary groups, Town and Parish Council's equal opportunity to receive funding towards community-based projects and schemes, where they meet the funding criteria.

### **8. Safeguarding Implications**

The Area Board has ensured that the necessary policies and procedures are in place to safeguard children, young people and vulnerable adults.

### **9. Applications for consideration**

<b>Application ID</b>	<b>Applicant</b>	<b>Project Proposal</b>	<b>Requested</b>
<a href="#">3371</a>	Easton Royal Village Hall	Easton Royal Village Hall replacement double doors	£746.00
<b>Project Description:</b> The double doors opening on to the Recreation Ground in the village hall have rotted at the bottom and require urgent replacement. they are a great feature of the Hall and are used regularly in good weather.			
<b>Input from Community Engagement Manager:</b> (CEM put your input here)			
<b>Proposal</b> That the Area Board determines the application.			



Application ID	Applicant	Project Proposal	Requested
<a href="#">3376</a>	Pewsey Vale Rugby Football Club	Playing Field Grass Cutting Machine	£1950.00
<p><b>Project Description:</b> Purchase of a three-gang ride on mower to cut grass at the Angela Yeates Sports Ground Pewsey. This replaces the existing tractor that is over 40 years old is broken down and beyond economic repair</p> <p><b>Input from Community Engagement Manager:</b> (CEM put your input here)</p>			
<p><b>Proposal</b> That the Area Board determines the application.</p>			

Application ID	Applicant	Project Proposal	Requested
<a href="#">3240</a>	Burbage Village Hall CIO	Burbage Village Hall New Doors	£1800.00
<p><b>Project Description:</b> Burbage Village Hall is in need of significant upgrading following many years of neglect. We have recently repaired the roof funded from our own reserves and we are now moving on to the next phase which is to secure the front entrance and improve the access. The current doors are not very secure, or weather proof and we want to ensure proper security and insulation as well as improving the look of the building before we move onto inside projects.</p> <p><b>Input from Community Engagement Manager:</b> (CEM put your input here)</p>			
<p><b>Proposal</b> That the Area Board determines the application.</p>			

Application ID	Applicant	Project Proposal	Requested
<a href="#">3405</a>	SWAST Community First Responder	Raizer Lifting Chair for Upavon Community First Responder Group	£1500.00
<p><b>Project Description:</b> A Raizer Chair is a battery-operated mobile lifting chair which assists a fallen person to an almost standing position within a few minutes. Equipping a Community First Responder CFR with a Raizer chair will enable early assistance to a person who has experienced a non-injury fall and reduce potential complications and discomfort and anxiety. Using the approved protocol, it may also prevent the need for attendance by a paramedic team.</p> <p><b>Input from Community Engagement Manager:</b></p>			

(CEM put your input here)

**Proposal**

That the Area Board determines the application.

No unpublished documents have been relied upon in the preparation of this report

**Report Author:**

Richard Rogers

Community Engagement Manager

01225 718626

[richard.rogers@wiltshire.gov.uk](mailto:richard.rogers@wiltshire.gov.uk)

# Pewsey Area Board Project – Cllr Jerry Kunkler

## 1. What is the project?

Use of the Open Blue Bus to provide a venue for young people in the Burbage & Upavon areas. Attending 10 times over a year, monthly omitting August December beginning in January 2020.

The Open Blue Trust use a converted 18 year old double deck bus as a mobile community centre. It has a kitchen/café area downstairs and toddler play/teen chill zone and kids craft areas upstairs. Kitted out with laptops, play stations, flat screens and wifi with internet access, this ‘village hall on wheels’ has allowed us to bring activities, that we take for granted but those living in isolated enclaves across Wiltshire struggle to access, right to their door step.

The Bus is mobile and will go right into the community so distances to it will be small which means it is safer for young people. Access to the bus is free to all so that no one is excluded. The bus has disabled access and anything we offer on the upper deck can be offered on the lower deck. Open Blues values include inclusivity and all staff and volunteers work hard to make all feel welcome and then included in the activities. The bus very often acts as a bridge for other agencies to access people who are otherwise difficult to reach. They tend to come on board and chat with the young people.

## 2. Where is the project taking place?

Upavon and Burbage

At Upavon the bus is proposed to go to Andover Road Upper Play Park and in Burbage to go to Martingale Rd. both places have a green space next to them which will enable a greater range of activities when weather permits.

## 3. When will the project take place?

The proposal is for the bus to visit once a month, 10 times over a 12 month period. Beginning in January 2020

#### 4. Who is the project aimed at?

Young people of secondary school age. 11-18yrs

#### 5. What are the Community benefits/evidence of need/desired outcomes?

There is very little support for young people generally now. It is even more difficult in rurally isolated areas.

Open Blue hopes to develop a good rapport with the local young people and the communities as a whole. Effectively beginning a youth work in these areas that will continue after the year long project is over.

#### 6. Who will manage/be responsible for this project?

Andy weeds the Project Director of the Open Blue bus

#### 7. Costs/quotes/ match funding?

Costs are £340 per 2 hr session

These costs cover:

Activity resources (food, games crafts etc), staff, volunteers, training, fuel, maintenance of the bus, insurances (vehicle, public & employers liability, Trustee indemnity),

Cost breakdown per venue:

Itemised Expenditure	£
eg Materials <a href="#">help</a>	
Vehicle & equipment running costs	£374.00
Activities costs	£510.00
Volunteer expenses	£289.00
Staff costs	£1870.00
Administration, training, insurances	£357.00
Total	£3400.00

Total for both venues =£6800

## 8. Any Other Information

Open Blue will provide a team to work on the bus.

It will also be open to local people willing to volunteer and be trained to be part of the team.

Open Blue has a comprehensive Child protection policy. All staff and volunteers are DBS checked as part of Open Blue safeguarding recruitment policy. There is a central record of DBS and staff references. All staff & volunteers have Child protection training. Andy Weeds is responsible for safeguarding. If young people are accessing the internet on their own device data plan then observation of what they are viewing & listening to is relatively easy, inappropriate useage is prohibited.

Open Blue will keep a register of those who use the bus and comments and quotes will be recorded along with a survey of the perceived effectiveness of the work.

A comprehensive Health & Safety risk assessment has been completed and is available if required.

This page is intentionally left blank

## **Pewsey Area Board Project**

### **Mental Health Support for young people – Cllr Jerry Kunkler**

#### **1. What is the project?**

Mental Health Champions for Vale of Pewsey Schools

#### **2. Where is the project taking place?**

Pewsey Vale School

#### **3. When will the project take place?**

Date to be confirmed but either October 2019 or January 2020

#### **4. Who is the project aimed at?**

This is to provide CPD for teaching assistants and teachers from a reliable source (Wiltshire Mind) to provide better mental health awareness and support in our schools for the benefit of students and staff and their families.

#### **5. What are the Community benefits/evidence of need/desired outcomes?**

Mental health has been identified in the JSA as a priority for many years, yet has not been addressed robustly. The local youth network has been trying to find something of benefit.

A request for help directly from the school was taken forward.

The course provides:

- An in depth understanding of mental health and the factors that can affect wellbeing
- Practical skills to spot the triggers and signs of mental health issues
- Confidence to step in, reassure and support a person in distress
- Enhanced interpersonal skills such as non-judgemental listening
- Knowledge to help someone recover their health by guiding them to further support - whether that's self-help resources, through their employer, the NHS, or a mix of organisations

#### **6. Who will manage/be responsible for this project?**

The LYN supported by a PCAP representative will be responsible for making the arrangements and liaising with the schools

### **7. Costs/quotes/ match funding?**

1 day MHFA course for those wishing to become Mental Health Champions. This would be at a cost of £1600. Minimum numbers - 8 with a maximum of 12. Delivered by Wiltshire Mind.

Course books and materials included in the cost

Pewsey Vale School to supply a suitable venue.

PCAP to provide admin support.



## Pewsey Area Board Project Christmas Ice Rink – Cllr Jerry Kunkler

### 1. What is the project?

To provide an artificial ice rink during the Christmas people for a positive activity for young people

### 2. Where is the project taking place?

Pewsey – Car park outside of Bouverie Hall

### 3. When will the project take place?

It will take place on December 14<sup>th</sup> as part of the Bouverie Hall Fair

### 4. Who is the project aimed at?

The project is aimed at young people primarily of secondary school age. However those of other ages can also take part.

### 5. What are the Community benefits/evidence of need/desired outcomes?

- Pewsey has no youth group and is limited in the activities it can offer to young people
- Following the need to withdraw the application for the wheeled vehicle park, this is an opportunity to offer a similar facility during the Christmas period
- When an ice rink was previously provided in Pewsey, it proved to be very popular
- Combining the ice rink with the Christmas fair offers an event that will help strengthen the community

### 6. Who will manage/be responsible for this project?

Pewsey Parish Council working with the Bouverie Hall

### 7. Costs/quotes/ match funding?

- The quotes for an ice rink for 1 day including full set up, professional staffing, insurance, provision of ice skates and all other costs will be up to £1,800.
- The cost of the wider event is hard to calculate accurately but is estimated that at least £4k will be also provided
- Previously tickets at a reduced price have been sold on the day which would also bring in several hundred pounds of income.
- It is therefore proposed that a sum of up to £1,800 is awarded to provide the ice rink facility but it is recognised that this may not all be required

This page is intentionally left blank

<b>Report to</b>	Pewsey Area Board
<b>Date of Meeting</b>	20/05/2019
<b>Title of Report</b>	Community Area Grant funding

**Purpose of the report:**

To consider the applications for funding listed below:

<b>Applicant</b>	<b>Amount requested</b>
<b>Applicant:</b> Burbage & Easton Royal Cricket Club <b>Project Title:</b> Burbage ER Cricket Club outfield levelling and re-seed  <a href="#">View full application</a>	£5000.00

**1. Background**

Area Boards have authority to approve Area Grants under powers delegated to them. Under the Scheme of Delegation Area Boards must adhere to the [Area Board Grants Guidance](#)

[The funding criteria and application forms](#) are available on the council's website.

**2. Main Considerations**

2.1. Councillors will need to be satisfied that funding awarded in the 2019/2020 year is made to projects that can realistically proceed within a year of it being awarded.

2.2. Councillors must ensure that the distribution of funding is in accordance with the Scheme of Delegation to Area Boards.

2.3. Councillors will need to be satisfied that the applications meet the Community Area Board grants criteria.

**3. Environmental & Community Implications**

Grant Funding will contribute to the continuance and/or improvement of cultural, social and community activity and wellbeing in the community area, the extent of which will be dependent upon the individual project.

**4. Financial Implications**

Financial provision had been made to cover this expenditure.

## 5. Legal Implications

There are no specific legal implications related to this report.

## 6. Human Resources Implications

There are no specific human resources implications related to this report.

## 7. Equality and Inclusion Implications

Community Area Boards must fully consider the equality impacts of their decisions in order to meet the Council's Public Sector Equality Duty.

Community Area Grants will give local community and voluntary groups, Town and Parish Council's equal opportunity to receive funding towards community based projects and schemes, where they meet the funding criteria.

## 8. Safeguarding Implications

The Area Board has ensured that the necessary policies and procedures are in place to safeguard children, young people and vulnerable adults.

## 9. Applications for consideration

Application ID	Applicant	Project Proposal	Requested
<a href="#">3277</a>	Burbage & Easton Royal Cricket Club	Burbage ER Cricket Club outfield levelling and re-seed	£5000.00
<b>Project Description:</b> The outfield at BERCC has become dangerous due to the un-even surface. The club has 110 juniors and 50 seniors. Last year 3 people got hit in the face due to humps and bumps on the current outfield. The outfield will be levelled and re-seeded with sports grass to make it a fantastic and safe facility for the community.			
<b>Input from Community Engagement Manager:</b> This application meets the grants criteria.			
<b>Proposal</b> That the Area Board determines the application.			

No unpublished documents have been relied upon in the preparation of this report

### Report Author:

Richard Rogers  
Community Engagement Manager  
07771547522  
[Richard.rogers@wiltshire.gov.uk](mailto:Richard.rogers@wiltshire.gov.uk)

## Wish lists for health and care services in BaNES, Swindon and Wiltshire revealed

Hundreds of people in Bath & North East Somerset, Swindon and Wiltshire have shared their views on how to improve NHS health services where they live.

Increasing the use of technology for booking appointments and data sharing between health services; helping people lead a healthier lifestyle to prevent illness; shortening waiting times for access to GP appointments; and for health professionals to have a better understanding of long-term health conditions, such as autism, were some of the themes that emerged from people in the region.

Their views were shared as part of the Healthwatch #WhatWouldYouDo? campaign and the findings are revealed in a new report.

Nearly 700 residents, patients and their families took part in 'What Would You do?' activities, which launched in March to encourage people in the region to share their views about how extra money from the Government should be spent on local NHS services.

The public were asked to give their views about how local services could improve, and to share ideas about how the NHS can help people live healthier lives and take more control of their care.

**Stacey Plumb**, Manager at Healthwatch Wiltshire, said: "The Government is investing an additional £20 billion a year until 2023 in the NHS as part of the NHS Long Term Plan. We were asked to help find out what local people thought was the best way for the NHS in Bath & North East Somerset, Swindon and Wiltshire to invest in the right services as part of this plan.



"It was wonderful to listen to so many people keen to make a difference in our local NHS. These views are all in the report and we will now monitor how the local NHS responds."

**Dr Ian Orpen**, Chair of the BaNES, Swindon and Wiltshire Clinical Board, said: "It's clear that local people have strong views about how health and care services should be organised in the future. We will listen to them and make sure we address their concerns as we draw up plans for how we organise services over the coming years."

The report is being shared with the local NHS and can be viewed on our website.

This page is intentionally left blank